



Monthly Newsletter

January 2026

Welcome to PACC's monthly newsletter.

If you have any questions or require any further information, please email: info@paccshropshire.org.uk

PACC- Facebook



PACC- Website



Meet the Operational team!



Sarah

Sarah leads on Influence and Change- including strategic meetings, operational work and safeguarding.



Abi

Abi leads on Community Support including our Healthy Lives Holiday Programme and PACC's Navigator Project.



Louise

Louise is our wonderful Administrator that keeps us all organised and diaries up to date!



Simone

Simone coordinates and delivers project support across the PINS programme and our schools forums work.



Ruth

Ruth is a Community Support Volunteer who helps with The Healthy Lives Holiday Programme and leads on JNR Buddies (8-14).



Annie

Annie is a Community Support Volunteer who helps with The Healthy Lives Holiday Programme and leads on Buddies (14-25).



Local Authorities have a **legal duty** to **review and amend an EHC plan** when a child or young person **transfers** from one **phase of education** to another.

Phase transfer is the moving between particular stages of education:

- early years education to school
- infant to junior school
- primary to middle school
- primary to secondary school
- middle to secondary school
- secondary school to a post 16 institution

This process must start within 12 months of a transfer to a new phase of education.

For those transferring from secondary school to a post-16 institution, the EHC plan must be reviewed and amended by **31 March** in the year of transfer.

For all other phases of transfer, the deadline is **15 February** in the year of transfer.

[READ MORE](#)



National SEND Conversation – West Midlands



On January 12th, PACC Influence and Change Lead, Sarah Thomas attended the National SEND Conversation event in Birmingham. This was the final in person event where the Department for Education heard directly from Parent Carers and SEND practitioners about what needs to change in the SEND system. This feedback will be used to inform the publication of the upcoming Schools White Paper in which the Government will explain its plans for the reform of the SEND system. A formal consultation will take place once the white paper is published.

[READ MORE](#)



The New SEND Inspection and Shropshire



Shropshire's SEND system is expected to be inspected soon under the new SEND Inspection Framework introduced in June 2025. The inspection looks at how well the local SEND partnership works together to support children and young people with special educational needs and disabilities (SEND).

The local SEND partnership includes education, health and social care services that plan, manage, deliver and review SEND support. The inspection covers all children and young people with SEND aged 0–25, including those with an Education, Health and Care (EHC) plan and those receiving SEN support.

PACC's role is to make sure parent carers' voices are heard during the inspection. This is done by sharing reports and data, and by attending meetings with inspectors, Shropshire Council and the Integrated Care Board to give direct feedback based on parent carers' experiences. PACC is working to gather honest and detailed feedback from parent carers about what is working well and what needs to improve within the Shropshire SEND system. To help with this, PACC will be sharing surveys over the coming months. Completing these surveys helps build a clear picture of what it is like to raise a SEND child in Shropshire, which will be shared with inspectors.

[READ MORE](#)



Have you looked at our new website? On our Information Provision Pages you will find:

- Mythbusting
- Resources
- Useful Organisations
- PACC Guides





You Said, We did

Following feedback from Parent Carers, that they are struggling to find information about Mental Capacity including when an assessment should take place.....



We are very pleased to have the wonderful Rhiannon joining us from Carers Academy to talk all things Mental Capacity!



Families that have previously attended these sessions have found them extremely useful and have been provided the tools to actively plan for their young person's future.

When? Thursday 26th February at 10:30am

Where? Zoom



[Register your interest here!](#)

Upcoming Events

Shropshire Parent Carer Council (PACC) run **monthly online info sessions** for Parent Carers. These are relaxed sessions designed to help families learn more about the support and services available in Shropshire.

They were set up after families told PACC, through the Community Navigator Service, that they wanted clearer information.

So far, sessions have included:

January: Direct Payments and moving from Children's to Adult Services

February: Mental Capacity (delivered by Carers Academy)

Coming up: Supported Living, mediation and tribunals, Annual Health Checks and finances and benefits, Shared Lives, Children's Social Care processes, Adult Social Care processes.

For more information follow our Facebook Page!



Transitions in Education– A guide for Parent Carers and Family Carers

[READ MORE](#)



A guide to provide information and signposting for Parent Carers and Family Carers to help them navigate educational transitions for children and young people.



Community Navigator Service

Offering personalised signposting and Information Provision for families of 0-25 year old's with SEND in Shropshire



Info@paccshropshire.org.uk

We understand how difficult and overwhelming it can be to navigate your child or young persons journey. PACC's Community Navigator Service is open to any Parent Carer of a child/ young person ages 0-25 with SEND in Shropshire.

How can PACC Help?

You will be offered an initial 30-minute phone/ Teams call with a Navigator. All of PACC's Navigators are Parent Carers themselves, so have both a lived and work experience of the SEND system in Shropshire. Following the call you will receive an email with information and signposting.

What can I speak to a Navigator about?

- Social Opportunities
- Finances and Benefits
- Staying Healthy
- Mental Health Support
- Being Part of the local community
- Housing Options
- Support for Parent Carers
- Support for Families
- Employment and Volunteering
- Help navigating the SEND system
- Education
- Education, Health and Care Plans
- Annual Reviews
- Activity Plans

How long will I wait for a call?

We try to book calls as soon as possible, usually within 72 hours of a request. Our Navigators work Monday to Friday Term-Time only.

How do I request a call?

You can either complete the linked MS form, or email us with the subject "Navigator Call"

Information & Support | Influence & Change



Join our mailing list

Young People and Work Report: Call for Evidence



The Government has launched the Milburn Review into why so many 16–24-year-olds are not in education, employment or training. Disabled young people must be part of this conversation.

We're still waiting for the Government's decision on whether the Universal Credit health element for severely disabled young people under 22 will be scrapped. Decision expected in New Year

Removing this support risks pushing disabled young people further from employment, education and training. This means the Milburn Review must consider the impact of potential benefit changes when examining the root causes of youth inactivity.

The Milburn Review is calling for evidence until 30 January 2026.



Home > Work > Young People and Work Report: Call for Evidence



Open call for evidence

Young People and Work Report: Call for Evidence

Updated 18 December 2025

Contents

1. Introduction
 2. Background and trends
 3. Call for Evidence
- [How to submit your evidence](#)

[Print this page](#)

1. Introduction

In November 2025 the government commissioned the Right Honourable Alan Milburn to author a report that will seek to:

- understand the drivers of the increase in the number of young people who are Not in Education, Employment or Training (NEET), including those claiming health and disability benefits and childhood experiences
- investigate the root causes of this rise in economic inactivity among disabled young people and those with health conditions
- make recommendations for policy responses aimed at increasing opportunities for young people

READ MORE



PINS Update



For the second year running, PACC has been working with primary schools across Shropshire as part of the PINS project (Partnership for Inclusion of Neurodiversity in Schools). The project began with twenty schools last year and has now grown to include fifteen more.

PINS is funded by the Department for Education through NHS England. The aim is simple: to bring health professionals, education specialists and parent carers together to help schools become more confident and inclusive in supporting neurodivergent children.

Parent carers have been at the heart of the project. Each school hosted three in-person meetings with PACC, giving parents the chance to share their experiences and talk about what works – and what doesn't. These conversations have directly shaped school training and development.

Although PINS funding ends in March, the impact has been clear: stronger relationships between schools and families, better understanding of children's needs, and more positive experiences for pupils.

READ MORE





Surveys

PACC collect feedback from Parent Carers and Family Carers via surveys to inform and influence change within the system.

Education, Health and Care Plans (EHCP)

You can provide feedback on your child/ young person's EHCP- including- Application Process, Annual Reviews, quality of plans and timeliness.



Reasonable adjustments in Mainstream schools

PACC want to understand how Shropshire Schools are using Reasonable Adjustments to support children and young people with SEND and promoting inclusion in schools.



Childcare for school-age children with SEND in Shropshire

PACC are currently collecting feedback about child care for children in Shropshire with SEND. The feedback from this survey will be shared with Shropshire Council to inform information on the Local Offer and identify any themes in feedback shared. All information shared will be anonymised.



Improving Social Care Experiences

PACC are currently collecting feedback from Parent Carers and Family Carers of how they feel their experience of Social Care in Shropshire could be improved.



SPRING TERM **SEND MEET & CHAT FAMILY DROP-IN**

Hosted by Shropshire Early Help









Do you care for a child or young person with Special Educational Needs and Disabilities (SEND)?

These sessions are open to anyone supporting a child with SEND — whether you're a parent carer, family member, or professional.

Come along to ask questions, get practical advice, and connect with professionals who understand your journey

Speak with experts in:

-  EHCPs
-  School support
-  Health and wellbeing
-  Social care
-  Mental health
-  Navigating SEND challenges

Each session will have different professionals available, so come along, have a chat, and find the help you need.

LUDLOW - HELENA LANE COMMUNITY CENTRE

Tuesday 20th January 2026
12:30pm-14:30pm

Helena Lane Community Centre, 20
Hamlet Rd, Ludlow,
SY8 2NP

SHREWSBURY THE LANTERN

Thursday 19th February 2026
10:00am-12:00pm

The Lantern,
Meadow Farm drive,
Shrewsbury, SY1 4NG

MARKET DRAYTON RAVEN HOUSE

Tuesday 24th March 2026
13:00pm-15:00pm

Raven House,
129 Cheshire Street,
Market Drayton TF9 3AH



HAVE YOUR SAY!

Scan the QR code to suggest topics and activities for future drop-in sessions.

**CAUDWELL
CHILDREN**

EATING & NUTRITION

LANGUAGE & COMMUNICATION

CHANGE & TRANSITION

MEETING SENSORY NEEDS

& MORE

FREE

**FAMILY SUPPORT
SESSIONS**

Shropshire Autism Support Service

Understanding Behaviours Workshop

Join us online to meet other parents and gain a better understanding of behaviours that may be challenging. Learn more about how Autism, ADHD and PDA may effect behaviour and how you can put in place suitable strategies .

Details:

When: Tues 3rd February
2026

Time: 10am - 12

Where: Online



To reserve your place, email:
kids.shropshire@kids.org.uk





Shropshire
Fire and Rescue Service

Home Education Workshop

Join us for an interactive, outdoor session with our Prevention Team for children aged 7 to 11 about water safety, hazards in the home, home fire safety, working together and keeping safe with the Police



Dates available:

Thursday 12th February 2026 10 am till 11:30 am

Whitchurch Fire Station - (This session is for children in Whitchurch and surrounding areas)

This is an educational session rather than a station tour, fire crews may not be at the station on the day you visit.

Numbers are limited. For further information or to book, email:



safeandwell@shropshirefire.gov.uk

More dates
coming
soon!



Do you want to share an activity or an event in PACC's monthly Newsletter?

for more information email
info@paccshropshire.org.uk




OSWESTRY
SEN PARENTS


Home Education & SEND Family Sessions at Ascend, Oswestry

We're pleased to let families know about two different regular sessions taking place at Ascend, offering private, inclusive spaces for our community.

 Home Education Soft Play Sessions

 Every other Tuesday

 Soft play only

 No age limit

 Private session exclusively for home-educating families

These sessions offer a relaxed, supportive environment for children to play and for parents to connect, without the usual noise and crowds.

 Family SEND Sessions

 First Friday of every month

 Soft play with no age limit

 Climbing available for children aged 5+

 Open to SEND families

A great opportunity for the whole family to enjoy Ascend together in a calm, understanding setting, with climbing available for those who would like to take part.

 All sessions must be pre-booked.

To book and receive the booking code, please contact Oswestry SEN Parents CIC via Facebook.

As always, these sessions are about creating safe, welcoming spaces where families feel comfortable and supported.

[READ MORE](#)





Healthy Lives Holiday Programme 2026

Activities for children and young people with SEND in Shropshire



The Healthy Lives Programme is PACC's Holiday offer. Healthy Lives offers a variety of activities to support physical and mental wellbeing, providing young people with SEND with opportunities to catch up with friends and be active.

The Healthy Lives Holiday Programme:

- Provides a variety of activities to support physical and mental wellbeing
- Provides young people with SEND with opportunities to catch up with friends
- Provides the opportunity to make new friendships
- Gives the opportunity to try new activities in a safe and inclusive environment
- Develops skills- confidence, independence, communication.
- Provides Peer support opportunities for Parent Carers

February Half-Term	Activities for 8-25 year old's
Easter	Activities for 8-25 year old's
Whitsun Week	Activities for 8-25 year old's
Summer	0-25 year old's, siblings welcome at some activities
October Half-Term	Activities for 8-25 year old's
Christmas	Activities for 0-25 year old's

The Healthy Lives Holiday Programme:

- Is not a holiday club
- Does not provide 1:1 support
- Is not childcare
- Does not require a referral. Parent Carers register their child/ young person. No formal diagnosis is required.

Registration now open for Easter!!

Are you looking for fun, accessible and inclusive activities to try with your child/ young person? Registration is now open for 2026!

Please note Children and Young People who accessed during 2025 will also need to complete a new registration form!

READ MORE



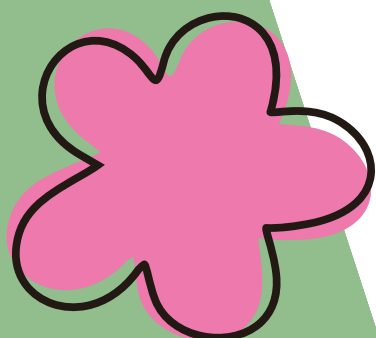


THINGS TO DO

What's on over February half-term?

Are you struggling to find activities over February half-term? We have found some fun activities in Shropshire!

Click the pictures to find out more!



What's on over February half-term?



FEBRUARY HALF TERM



Visiting the garden at
Attingham Park



Alderford



HAVE FUN

Have you tried Multi-
Racket SEND Sessions?

8-17 Yrs

Tuesdays and Fridays

4pm-5pm or 5pm-6pm



Check our website for
more information!



JENNA BLAIR YOGA
COMMUNITY



JENNA BLAIR YOGA.CO.UK



Mereside Community Centre,
Mereside, Shrewsbury SY2 6LH

Book via email- **10.30 - 12.30**
jamila.walker@takingpart.co.uk

£4 per child £10 per family with 3 or more children



Moving and Grooving presents
Active Adventures
Inside and Out

Aimed at SEND families, and those who like
creative play **Session Plan (7-14 years olds)**

Jan - March 2026

Activity Session Plan

Saturdays in 2026

Child led session, below is a flexible structure
Saturdays in 2026

17th Jan Build your own obstacle course

7th Feb Drawing games and drawing scavenger hunt

21st Feb Fairy wand making and **Rock! Music School**

7th March Parachute games

21st March Lego Challenges and **Rock! Music School**



Please note activities may change, due to weather and/or other
circumstances, which are out of our control.



Taking Part Presents Escape Club Nights



7pm - 9pm



£3 (Free entry for carers)

**The Hive, 5 Belmont,
Shrewsbury, SY1 1TE
Wednesdays**

2026

April 1st & 15th

May 6th & 20th

June 3rd & 17th

July 1st & 15th

September 2nd & 16th

October 7th & 21st

November 4th & 18th

December 2nd & 16th



@TakingPart

www.takingpart.co.uk

01743 363399



FUNZONE

Whitchurch

**GRANDPARENTS
GO FREE**



WITH A CUP OF TEA

MONDAYS

COME AND JOIN THE BAND music for fun!



FORTNIGHTLY, THURSDAYS 3.30 - 4.30PM

NOV 6TH & 20TH

DEC 4TH & 18TH

JAN 8TH & 22ND

FEB 5TH & 19TH

**MUSIC KIT AND TUTORS PROVIDED, JUST COME AND
HAVE A JAM**

We're teaming up with Rock! Music School. You have a chance to learn and discover, play and stay. Professional tutors will be here, to give music tuition in a judgement free, playful, experimental music school.

Don't want to play straight away?

Just stay and listen while others play

For more information call in and ask, or just rock up!

SHROPSHIRE



**Whitchurch Library, St Mary's Arcade,
High Street**



**Shropshire
Libraries**
Learn imagine discover