

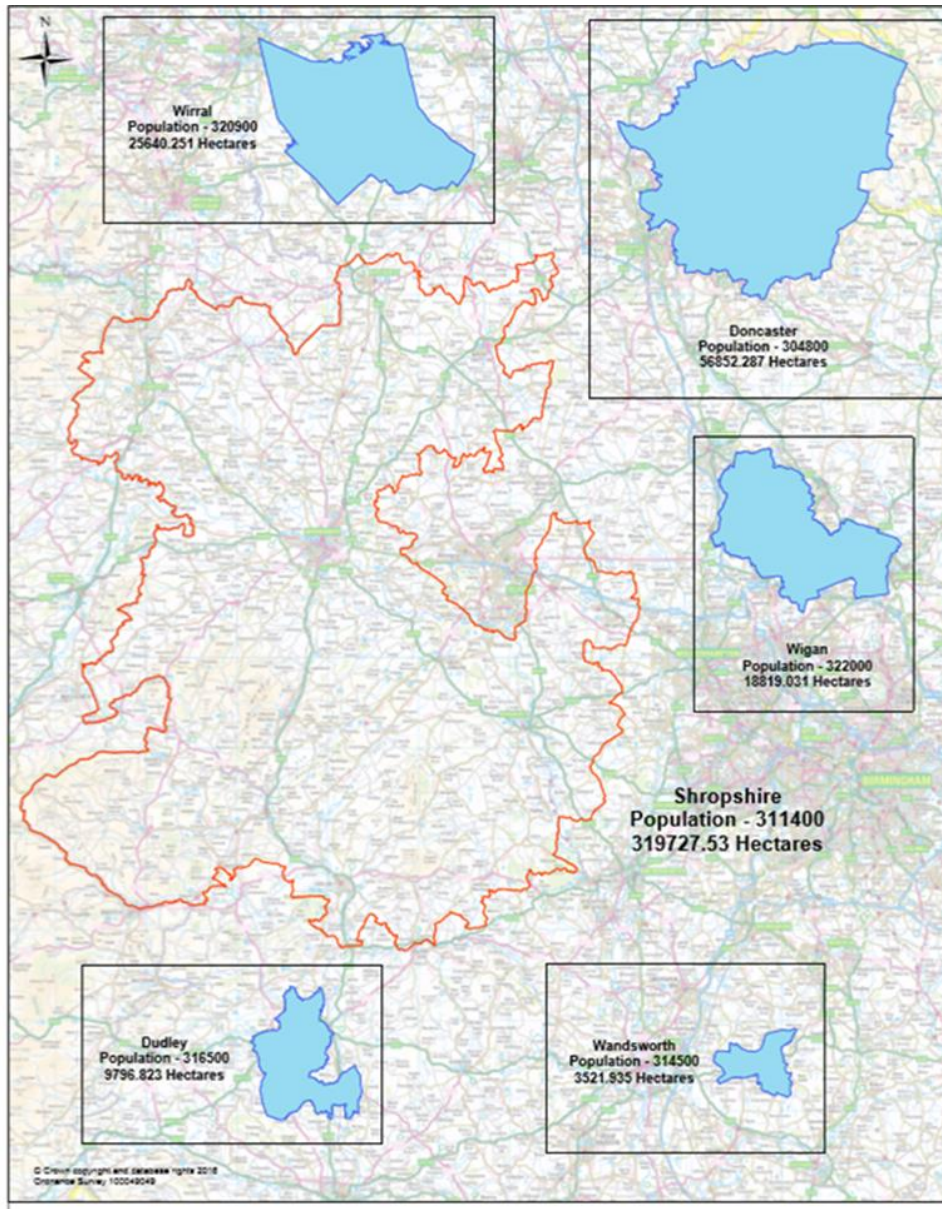
Shropshire SEN Provision

PACC AGM

November 2017

Julia Dean

Shropshire context



Early Years Provision

Severndale specialist nursery 40 part time places commissioned (15 hours per week)

Current number in nursery – 9 (Oct 17)

July 2017 there were 38

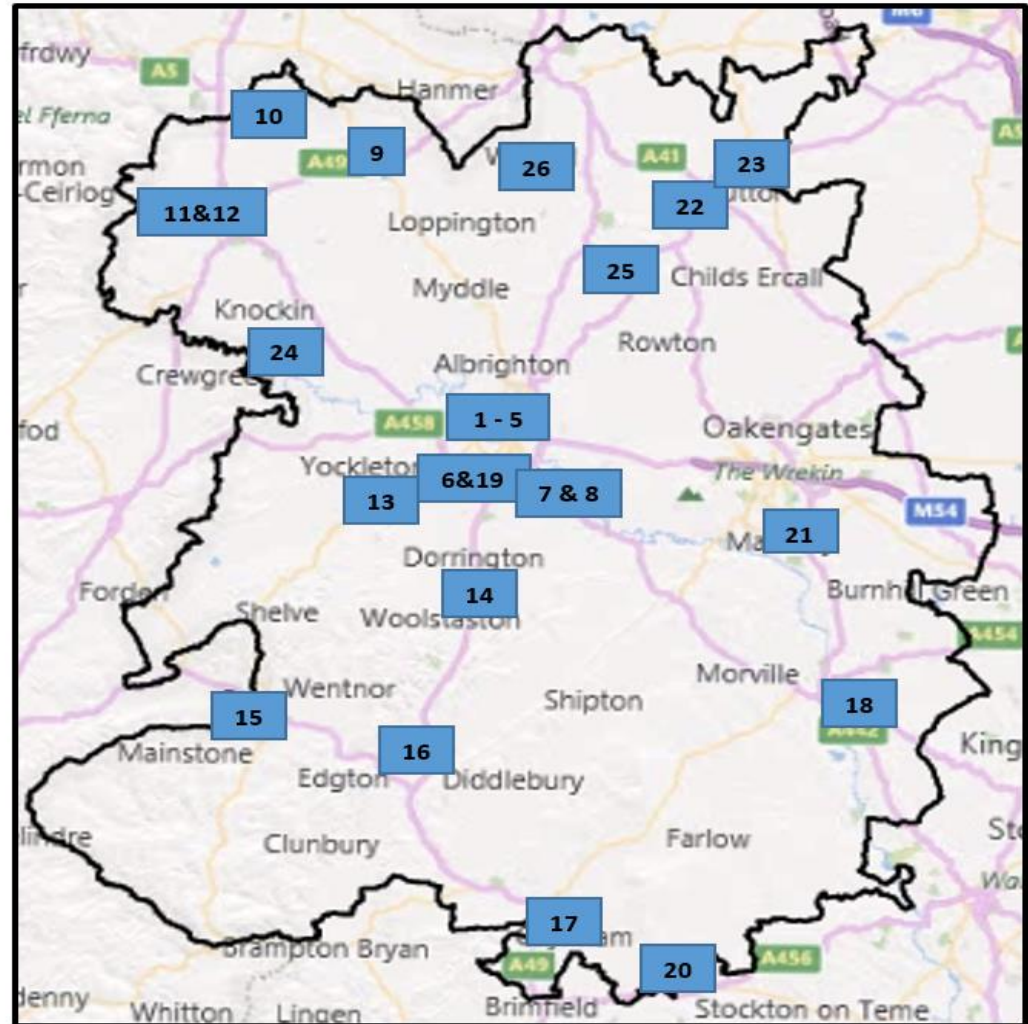
MDA increasing numbers of children referred demonstrates an increase in the numbers of children with complex SEN who are likely to require specialist provision at some point in the future.

Currently (Oct 17) there are 34 Shropshire children in years -2 and -1 who have an EHCP.

MDA process linked to request for EHC needs assessment has seen a significant increase in the number of very young children receiving an EHCP.

Early Years and Nursery Preferred Providers (2016)

1. Daisy chain Sutton farm
2. Daisy chain Copthorne
3. Holy Trinity playgroup Shrewsbury
4. Opportunity pre school Shrewsbury
5. Nesscliffe house nursery school Longden Rd Shrewsbury
6. Christ Church Bayston Hill
7. Condover Pre-school, Condover, Shrewsbury
8. Farm Friends Days Nursery Home Farm, Condover
9. Janet Austin Ellesmere
10. Gobowen all rounders Oswestry
11. Saira Mortimer, t/a "Horner's Corner", Oswestry
12. Morda pre school
13. Pontesbury primary nursery
14. Busy bees pre school Church Stretton
15. Crowgate Child Centre Ltd Bishops Castle Children's Centre
16. Wistanstow under 5's
17. Chatterbox Ludlow
18. Bonny Bundles – Bridgnorth
19. Kym Crippin
20. Burford Preschool
21. Sheriffhales Montessori Preschool
22. Rainbow preschool Tern Hill nr Market Drayton
23. Mount Lane Market Drayton
24. Kinnerley CE Primary School.
25. Hodnet preschool
26. Whixall Whitchurch



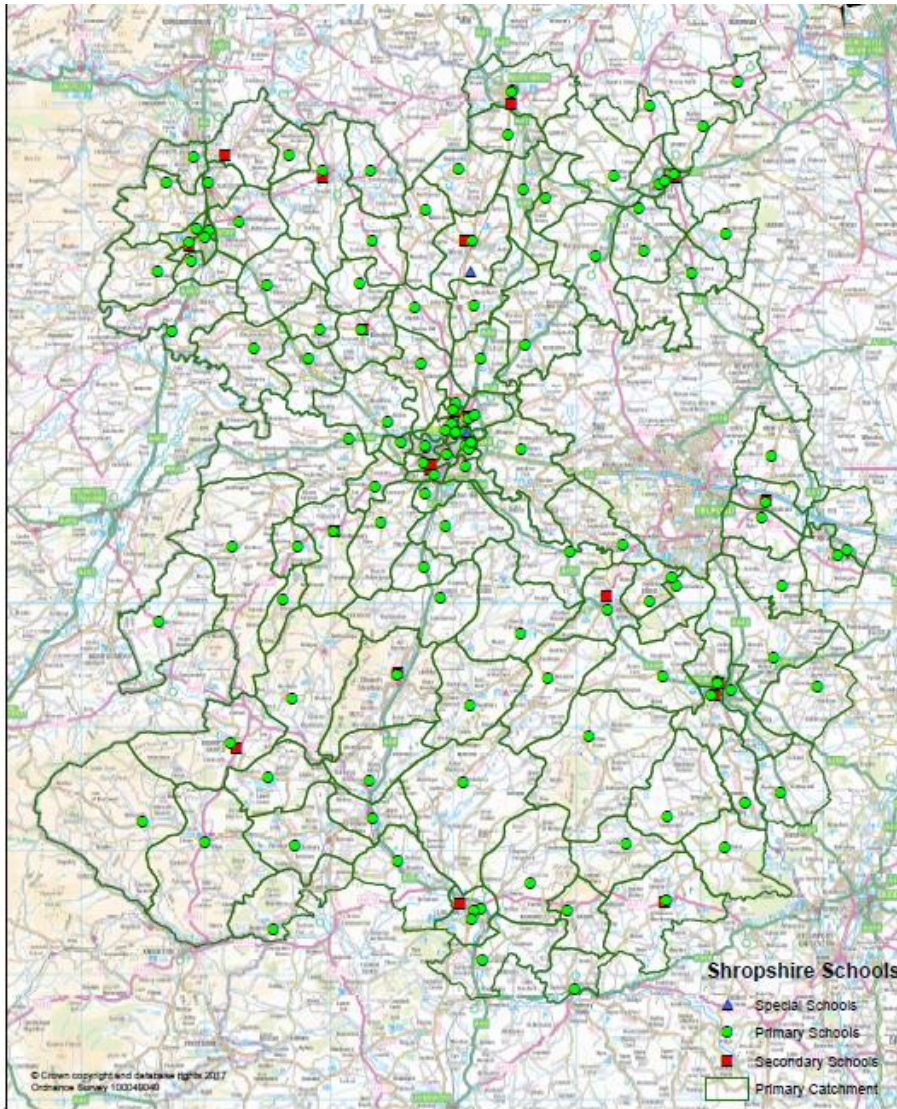
Support Services

Educational Psychology Service (EPS)

Child Development Centre

Sensory Support Service (SIS)

Portage



Schools Overview

Primary

- Of the 129 primary schools within the county **86** are named on the designated **rural schools** list (2016)
- 49 primary schools in Shropshire have less than 100 pupils on roll (Census data: Spring 2017)

Secondary

- There are 19 secondary schools and 1 'all through' school

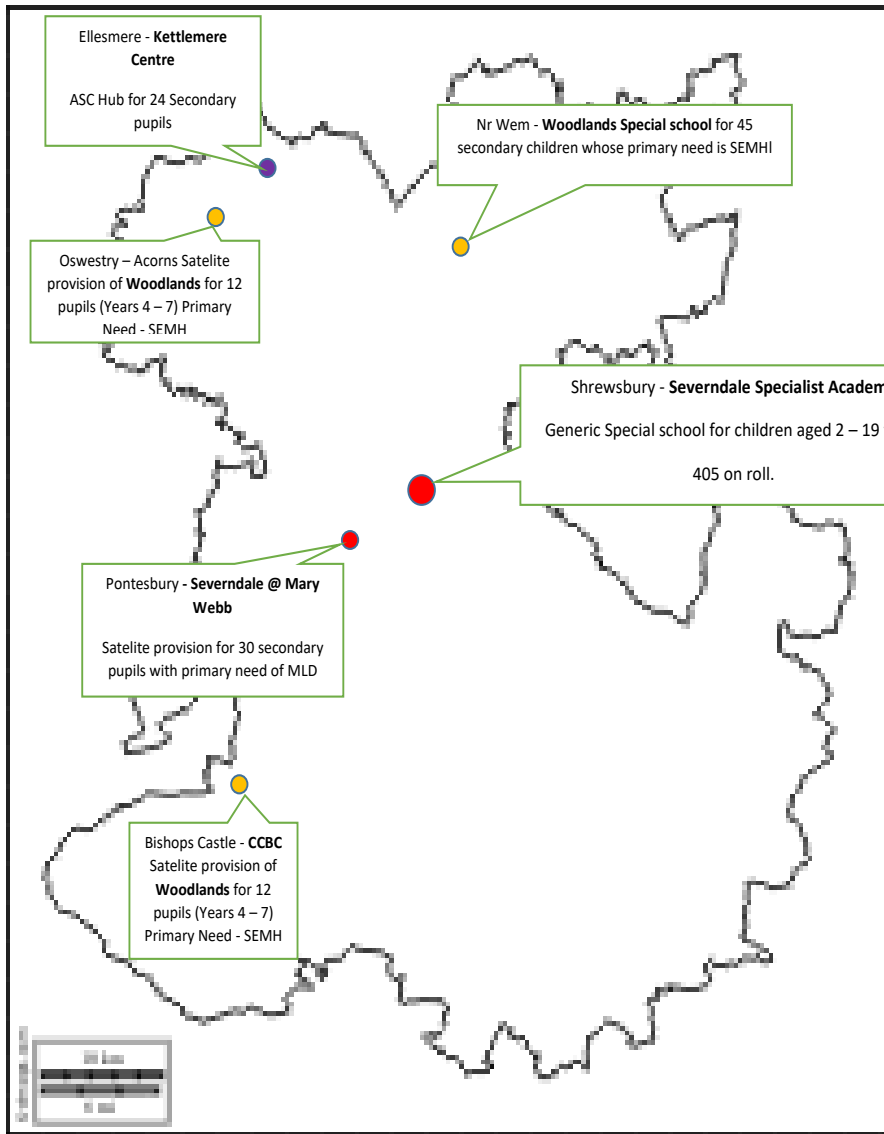
Special

- There are 2 Special schools and one PRU (TMBSS).

Ofsted

93% of schools (Including TMBSS) were rated Good or better
(Source: Dataview)

<i>Census: Spring 2017</i>	Maintained	Academy
Primary	112	17
Secondary	17 Inc. 1 all-through	14 Inc. 2-19 Special



Special Schools

Shropshire only has two Special Schools.

Severndale Academy is the largest special school in the country and is centrally located in Shrewsbury Generic special school which means it caters for a range of needs from MLD to PMLD

Woodlands School SEMH LA maintained located near Wem

Both rated 'good' by Ofsted

Tuition Medical Behaviour Support Service (TMBSS)

Multiple sites covering the county

Oswestry: primary/secondary

Shrewsbury: primary/secondary

Bridgnorth: primary/secondary

Ludlow: secondary

Intervention and assessment places KS1, KS2 and KS3

KS 4 longer term placements

Hospital tuition

DfE Statistical First Release (SFR) 29/2016

Shropshire School Population 43956

Shropshire Statements/EHC plans (all ages) 1649 rate **3.8%** National Average **2.8%**

Shropshire SEN Support 4353 rate **10%** National average **11.6%**

Shropshire Total SEN 6002 rate 13.8% National Average 14.4%

Additional data (*ONE data base*)

Year 0 to Year 11

Attending a special school in Shropshire 359 + maintained/academy out of county 76 + independent special school 55 of these 47 are non-residential. (total 490)

Post 16 – 273 with an EHCP of these 73 are post 19.

Education Support Services

Education Access Service

Educational Psychology Service (EPS)

Sensory Support Service (SIS)

SSLIC

Woodlands Outreach

Spectra

+ Autism Training (AET) Level 1 – all schools

Local Further Education

Colleges and Training Providers – Shropshire

Sarah Sweeney

SEND Support in FE

Bespoke study programmes upon a young person's needs.

- Specific learning support
- Specialist support
- Pastoral
- Meet and greet/Support in unstructured time
- Orientation and transition visits from school
- 1:1 Sessions – assistive technologist
- Information, Advice and Guidance
- Personal/Medical support and care
- Course with small groups

- **North Shropshire College** – Oswestry, Walford, Wem, Shipley and Aspire
- **Shrewsbury College Group** – Central London road, Welsh & English Bridge
- **Hereford & Ludlow College and County Training** - Ludlow, Hereford, Holme Lacey, Shrewsbury (Gateway), Oswestry, Whitchurch, Telford, Ludlow and Hereford
- **Nova Training** - Bridgnorth in Shropshire, Wolverhampton, Hereford, Kidderminster, and Telford & Wrekin.
- **Juniper Training** - Wolverhampton, Telford and more recently Market Drayton.
- **Telford College** – Haybridge and King Street Wellington

Specialist Colleges

- Derwen 3 sites - (Oswestry, Craven Arms & Walford)
- Conover College - Longbow

Recent changes

- **Shrewsbury College Group** Merger in 2016 between of Shrewsbury College of Arts & Technology and Shrewsbury 6th Form
- **Telford College** set to officially merge between Telford College of Arts and Technology and New College Wellington
- **Nova Training** a new base in Shropshire, Market Drayton from 2017

Study Programmes

- Vocational (specific), academic, work experience, supported Internships, apprenticeships.
- Technical, catering, hair, beauty, forestry, farming, IT, recycling, furniture, mechanics, hospitality, music, theatre, science, sports law, maths, media studies, photography, physics, psychology, philosophy, gaming, engineering, retail.....
- Work tasters, employability, confidence, resilience, careers advice specific targeted support.